

Mercedes AMG electric hypercar

Mercedes-AMG presents its new all-electric hypercar concept to showcase technologies that will be available to customers from 2026

Mercedes-AMG GT XX

At 1,360hp, more powerful than €2.5m limited edition **AMG One**

Light Paint: Whole surface can light up

Aero Wheel: Brake cooling and improves downforce



Front motor:

Single electric drive unit 80kg



Combined power output

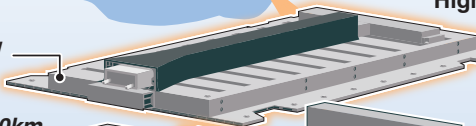
1,000kW



Rear motors:

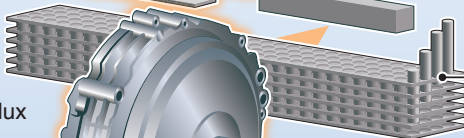
Twinned electric drive unit
140kg

Battery: 850kW recharging via standard CCS cable. **Up to 400km in five minutes**



High-performance 800V electric system

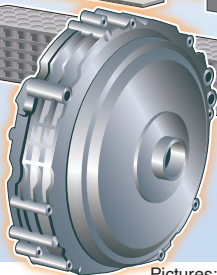
Direct-cooled cylindrical cells



AXIAL FLUX MOTOR

Compared to radial flux motor

Weight:	33%
Length:	33%
Power density:	x3
Torque density:	x2



Maximum speed

