

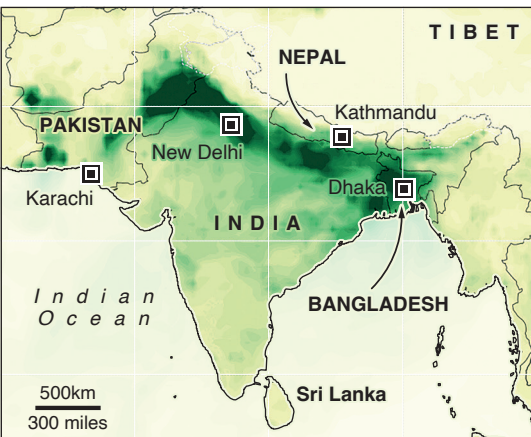
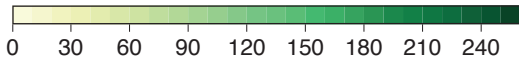
Lethal air pollution plagues South Asia

In the first month of 2025, severe air pollution has affected South Asian countries such as Pakistan, Nepal, India and Bangladesh – notably spreading cancer-inducing particulate matter known as PM2.5

*Signature Bridge,
New Delhi*

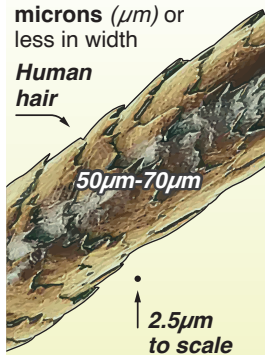


PM2.5 POLLUTION – Composite image
Jan 1-29, 2025, cubic micrometers (μm^3)



DEADLY DUST

PM2.5: Fine particulate matter that is **2.5 microns (μm)** or less in width



When inhaled, PM2.5 can enter bloodstream and is linked to **asthma, heart disease, lung disease and cancer**