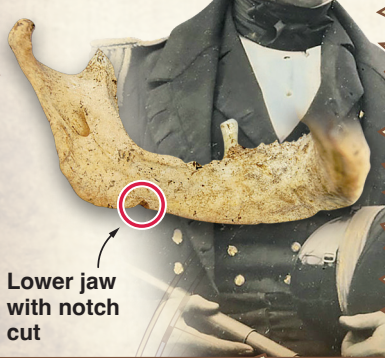


1 CANADA: The British *Franklin Expedition* of 1845 ended in tragedy when the ships *HMS Erebus* and *HMS Terror* became trapped in pack ice. All 134 men on board died, but not before resorting to cannibalism. Now scientists have identified, from a jawbone with multiple cut marks, that one of the men eaten was none other than **Captain James Fitzjames** of the *Erebus*



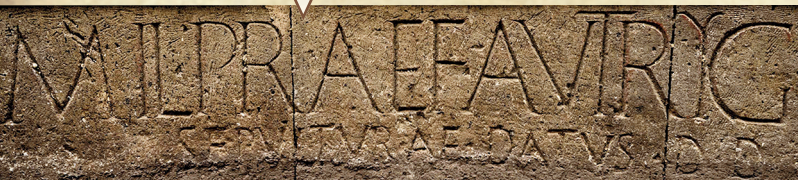
Lower jaw with notch cut

5 BRAZIL: Researchers have documented more than 50 petroglyphs in *Dinosaur Valley* – famed for its *Cretaceous* period dinosaur footprints. The human markings, dating back 3,000-9,000 years, show that prehistoric people were aware of the fossilised tracks and that they meant something to them

Theropod footprint



6 ITALY: A very rare and ornate schola tomb was discovered in *Pompeii*, likely commemorating a high-ranking soldier who served in *Spain* under Roman emperor *Augustus* (27 BC-AD 14). An inscription (*below*) shows it was dedicated to a man named **Numerius Agrestinus Equitius Pulcher**



Archaeological discoveries in 2024

2 GUATEMALA: Archaeologists discovered a collapsed burial chamber beneath the floor of a small pyramid in the ancient city of *Chochkitam*. Among the items recovered were a partial skeleton belonging to a **Mayan** ruler and a jade mosaic mask (*right*) with mother-of-pearl eyes



3 PANAMA: Unearthing of the 1,250-year-old *El Caño necropolis* on the banks of the *Rio Grande*, led to the remains of a man, thought to be **Coclé**, draped in gold ornaments and buried face down alongside numerous gold figurines and eight gold breastplates (*right*)



4 PERU: At *Pañamarca* – a once vast cultural centre for the **Moche** people around AD 350-850 – archaeologists uncovered the country's first evidence of a throne room designed for a Moche queen, including an earthen royal seat and vivid murals depicting a powerful woman



9 AUSTRALIA: Researchers have concluded that a pair of seemingly unremarkable sticks (*below*) unearthed in *Cloggs Cave*, were used more than 10,000 years ago to cast spells. How they were arranged on small hearths matches practices used today, making it the only known **Ice Age** ritual to have survived to the modern era



7 EGYPT: On the banks of the *Nile* near the thriving ancient frontier city of *Aswan*, Egyptologists discovered a huge tomb containing the remains of 46 men, women, and children dating from the second century BC, along with statuettes (*above*) and painted mummy cases



8 RUSSIA: Excavation of a burial mound in Siberia (*right*) shows that **Scythians** – a horse-centred culture from 900-200 BC – occupied lands further east than previously believed. The find includes the remains of sacrificed horses and riders, and artefacts depicting animals

