

Huge Maya city discovered in Mexico

A team of researchers have found a lost Maya city hidden for centuries under jungle canopy in Mexico using Lidar data – a type of laser survey that maps terrain buried under vegetation



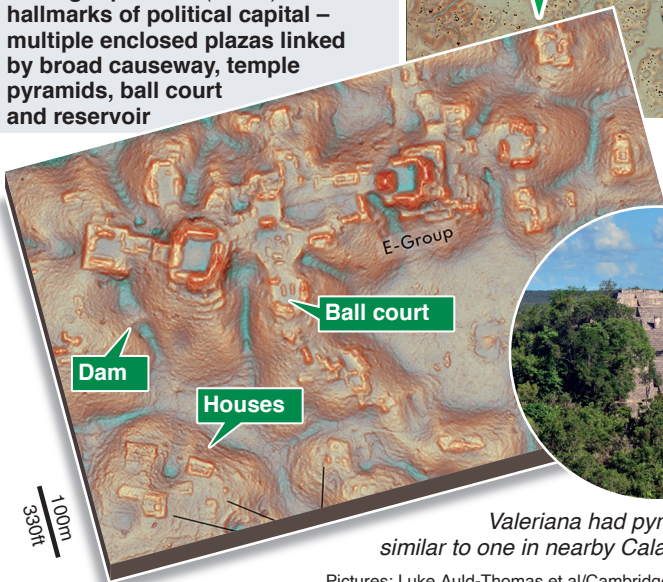
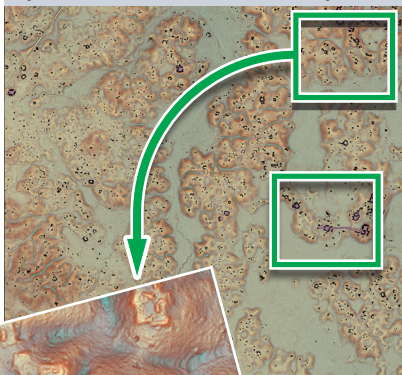
■ Comprising 6,674 structures, Valeriana is thought to have been second in density only to Calakmul, largest Maya site in ancient Latin America

■ Larger precinct (*below*) has hallmarks of political capital – multiple enclosed plazas linked by broad causeway, temple pyramids, ball court and reservoir

VALERIANA

■ Named after nearby lagoon, may have been home to 30-50,000 people at its peak in 750-850 AD

■ City, which is 16.6sq km, has two monumental precincts (*green squares*) around 2km apart, linked by dense houses and causeways



Valeriana had pyramid temples similar to one in nearby Calakmul (above)