

# Millions flee path of Hurricane Milton

Milton to make landfall on the exposed and heavily developed coastline of Tampa, Florida – striking a region that hasn't had a direct hit from a hurricane in more than a century

## STORM SURGE WARNINGS



Up to 3ft (0.9m)



Up to 6ft (1.8m)



Up to 9ft (2.7m)



Up to 12ft (3.6m)

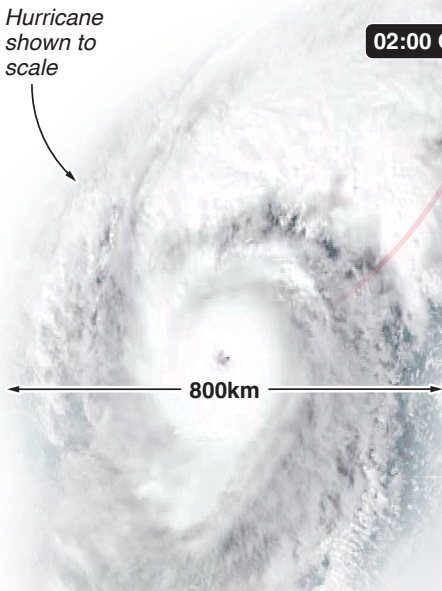
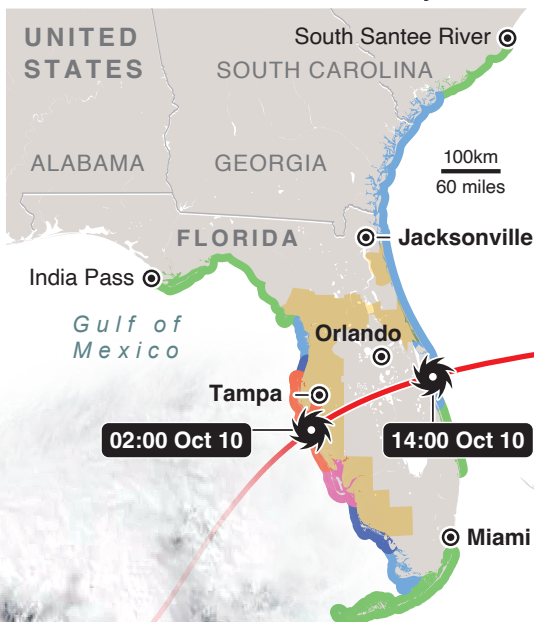


12ft+ (3.6m+)



Mandatory evacuation zones

Hurricane shown to scale



## HURRICANE MILTON

Strongest tropical storm worldwide in 2024

13th named storm  
9th hurricane

4th major hurricane

2nd Category 5 hurricane  
of 2024 Atlantic hurricane  
season

More than 5.5m people  
urged to leave Florida's  
west coast – one of  
largest evacuations  
in state history

Time: Eastern Daylight Time (GMT-4 hrs)

Sources: New York Times, NOAA, FloridaDisaster.org

Picture: NOAA/CIRA

© GRAPHIC NEWS