

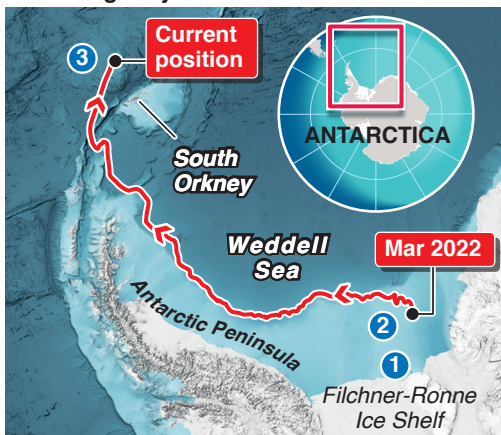
World's biggest iceberg spins in ocean trap

The world's largest iceberg, known as A23a, is captured on a rotating oceanic vortex north of Antarctica that could keep it from melting for years

1 1986: A23a calves off Filchner Ice Shelf, but quickly becomes grounded on sea floor

2 2022: Berg loses grip and starts moving across Weddell Sea

3 Apr 2024: A23a crosses into **Antarctic Circumpolar Current** – instead of heading towards warmer waters, it is trapped in **Taylor Column**, a massive rotating cylinder of water



Taylor Column: As current meets obstruction on seafloor, under right conditions, it can separate into two distinct flows, generating mass of rotating water between them

In this instance, obstruction is 100km-wide bump on ocean bottom known as **Pirie Bank**

Antarctic Circumpolar Current

A23a: Rotating anti-clockwise by around 15 degrees per day

Berg has area of 3,600 sq km – twice the size of Greater London

Rotating water

Pirie Bank

South Orkney Islands

100km
60 miles