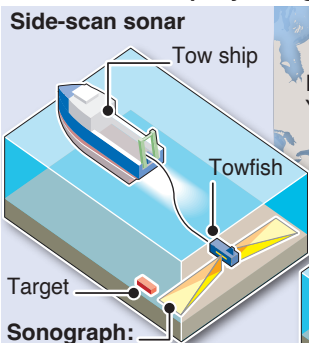


# Titanic: Seen as never before

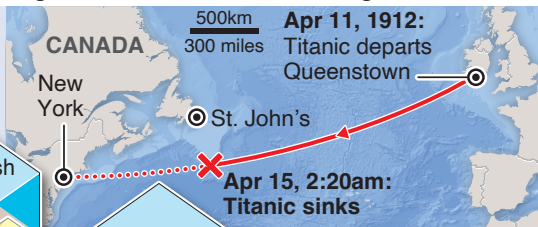
The first full-sized digital scan of the Titanic – which lies 3,800m beneath the Atlantic – has been created by Magellan, a deep-sea mapping company, using 700,000 side-scan sonar images

## Side-scan sonar



## Sonograph:

Signals create detailed image of reflectivity of objects on ocean floor, using frequencies between 100 and 1,000kHz



**Titanic:** Lies in two parts, with bow and stern separated by about 800m

