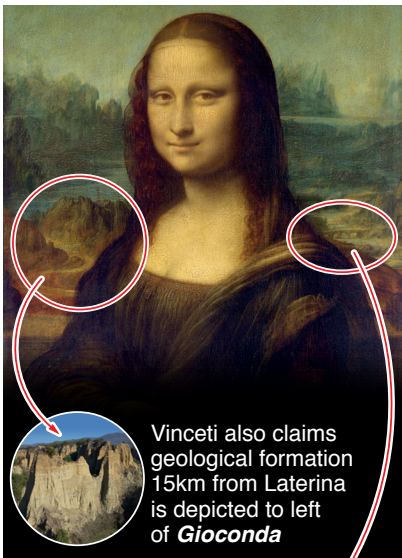
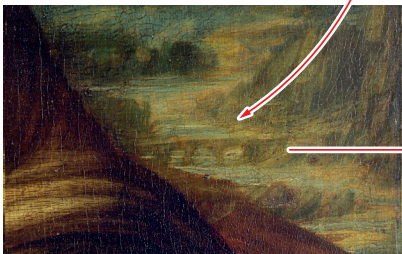


# Mona Lisa's bridge "discovered"

Using historical documents and drone images, art historian Silvano Vinceti claims to have identified the stone bridge depicted behind Leonardo da Vinci's *Mona Lisa*, ending a 500-year mystery



■ **Romito bridge:** Vinceti believes overpass depicted in 16th century painting is Etruscan-Roman bridge that used to span *Arno River* near village of *Laterina*



■ Documents found in Florence's state archives show bridge was "very busy bridge" in 1501-03, when Leonardo was in Val d'Arno



■ Using size of remaining arch, Vinceti established that four arches of same size fitted perfectly across stretch of Arno River