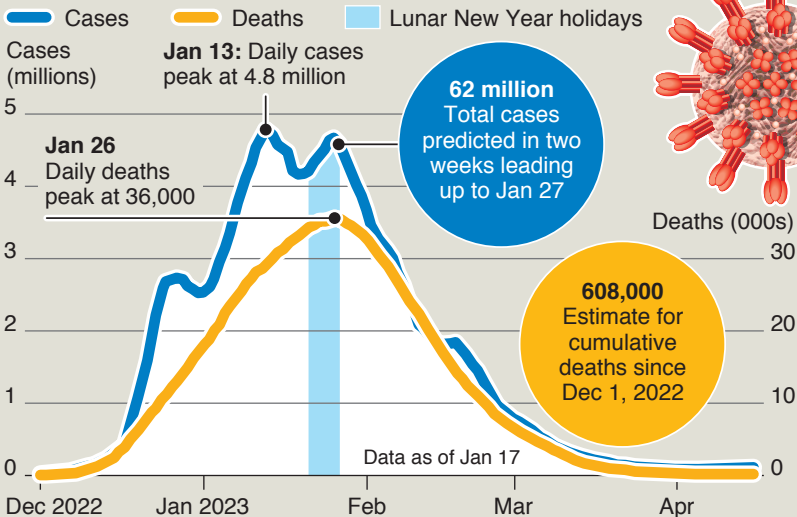


# China Covid deaths expected to surge

China could see 36,000 Covid deaths a day during the Lunar New Year holidays, making it one of the most deadly periods of the pandemic, according to new analysis

## FORECAST FOR COVID-19 CASES AND DEATHS IN CHINA



**Jan 14, 2023:** China reports nearly 60,000 Covid-related deaths among hospitalised patients since early December. **Before this announcement, China's official Covid-19 death toll stood at 5,272 for entire pandemic**