

One-in-seven has had Lyme disease

More than 14% of the world's population has had Lyme disease, a common tick-borne illness, according to a major new research paper

LYME DISEASE INFECTION RATES

Borrelia burgdorferi, bacteria that causes Lyme disease, found in blood of **14.5%** of nearly **160,000** study participants

Central Europe **20.7%**

Eastern Asia **15.9%**

Western Europe **13.5%**

Southern Europe **11.1%**

Eastern Europe **10.4%**

North America **9.4%**

South America **8.7%**

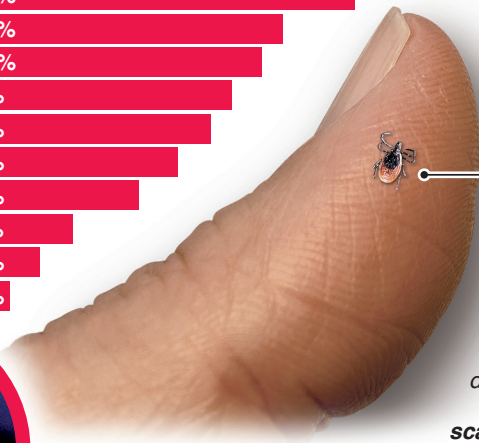
Northern Europe **7.6%**

Western Asia **6.3%**

Oceania **4.1%**

Southern Asia **3.0%**

Caribbean **2.0%**



Adult female deer tick, *Ixodes scapularis*

People bitten by infected tick often suffer rash (left) and flu-like symptoms including muscle and joint pains, headache and nausea. Extreme cases can cause facial nerve paralysis

