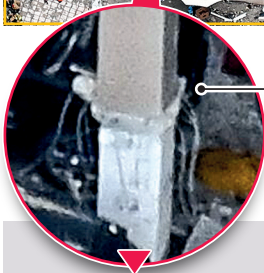


Possible structure defect in collapsed condo

Structural engineers think critical concrete supporting structures at the collapsed Champlain Towers South condominium may not have had enough internal reinforced steel bars, known as “rebar”



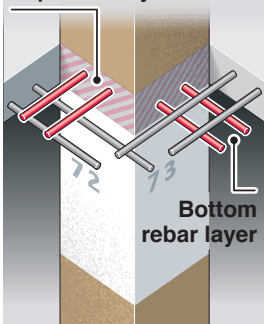
Aerial view looking into collapsed ground level parking garage



Collapsed deck exposes areas where rebar is used to connect three pillars to concrete floor. Photos indicate **two** or **three** rods sticking out of each pillar's face

Two rods per face would mean **four** bars passing through each column

Top rebar layer



1979: Original plans stipulate **eight** bars should pass through each column

Section exposed by floor collapse

