

# Fifth Indiana Jones movie filming underway

Filming of the hugely anticipated fifth and final instalment in the Indiana Jones movie saga is underway in the UK, with WWII Nazi vehicles spotted in Yorkshire and explosions seen at a castle in Northumberland

**Bamburgh Castle**, Northumberland, has had fake walls and turret added to it, with local residents witnessing explosions and gunfire

**!! SPOILER ALERT !!**

Crew make finishing touches to turret on wall in grounds of Bamburgh Castle (left), before setting it on fire (below)

Given WWII setting, speculation is rife that movie features flashback to 1940s, possibly using de-aging technology to bring Ford closer to his appearance in first three films

Rumours are that main plot involves 1960s space race

This is first Indiana Jones movie not to be directed by Steven Spielberg. Instead James Mangold takes up reins

**Mads Mikkelsen** spotted by fan outside Roman House in Newcastle (right)

Nazi vehicles parked on location in **Grosmont** (below), where production has taken over vintage **North Yorkshire Moors Railway**

**John Williams** is back onboard to compose final film's score

**Harrison Ford** is back for final outing as 'the man in the hat', **Indiana Jones**

# INDIANA JONES

SCOTLAND

**Bamburgh Castle**

**Newcastle** • **Ship's Cat**

• **Grosmont**

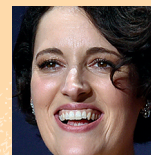
100km  
60 miles

ENGLAND

WALES

**Pinewood Studios** • **London**

Ford, in cycling garb, taking time out at **Ship's Cat** restaurant in **North Shields** (above left) and walking in costume outside train station in **Grosmont** (right)



**Phoebe Waller-Bridge** (known for **Fleabag**) also stars



**Mads Mikkelsen** (**Casino Royale**) will likely play villain



## PREVIOUS INSTALMENTS

**Raiders of the Lost Ark** (1981): Set – 1936. Jones is hired by U.S. government to find **Ark of the Covenant** before **Adolf Hitler** can obtain its awesome powers

**Indiana Jones and the Temple of Doom** (1984): Set – 1935. Jones searches for mystical stone, then stumbles upon secret cult sacrificing humans beneath ancient palace

**Indiana Jones and the Last Crusade** (1989): Set – 1938. Jones is on hunt for his missing father and **Holy Grail**, going up against Hitler and his Nazis once more

**Indiana Jones and the Kingdom of the Crystal Skull** (2008): Set – 1957. Jones becomes entangled in Soviet plot to uncover secret behind mysterious crystal skulls

Pictures (top to bottom, left to right): Bamburgh Castle, Sarah Beaumont, LucasFilm, @lozzadavies/Twitter, @IainJoseph89/Twitter, The Ship's Cat, @imis007/Twitter, Peter Harbour/Yorkshire Live, Associated Press. Sources: HITC, IGN, Yorkshire Live, Deadline, IMDb, Twitter, Facebook © GRAPHIC NEWS