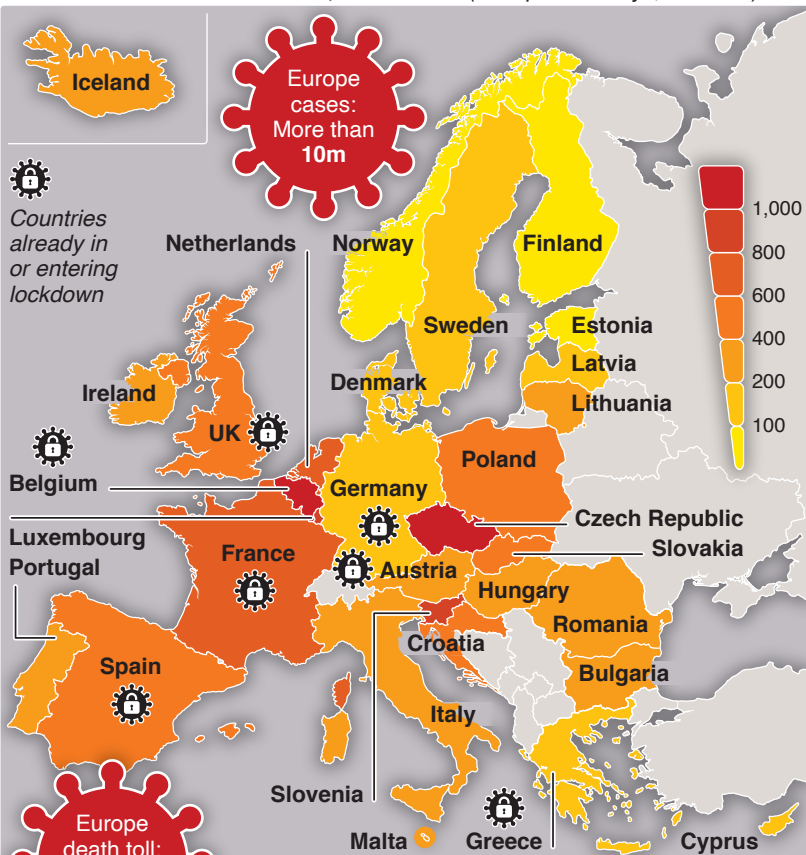


# Europe under lockdown

Large swathes of Europe are again entering lockdown in a bid to slow an alarming rise in Covid-19 cases, as a second spike takes hold

**CORONAVIRUS CASES PER 100,000 PEOPLE** (over past 14 days, to Nov 2)



**UK:** Four-week partial lockdown in **England** from Nov 5

**Germany/Austria:** Partial lockdowns shut bars, hotels and restaurants

**Italy:** Possible weekend mall closures and limits on travel

**France:** Expand lockdown to limit sale of non-essential items

**Spain:** More regions to close domestic borders

**Belgium:** Non-essential stores closed. Family visits restricted

**Greece:** Mass closures in high-risk zones. Masks compulsory