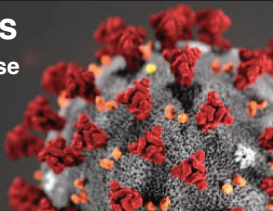


# Key facts about the coronavirus

The new coronavirus first identified in the Chinese city of Wuhan belongs to a family of viruses that includes the common cold and more serious illnesses such as SARS (severe acute respiratory syndrome). The disease caused by the new virus has been named Covid-19\*



## Symptoms

Include fever, cough and breathing difficulties. About 82 percent of cases are mild, similar to common cold. Some 15 percent of cases are severe and three percent are critical, according to Chinese data shared with WHO



## Transmission

Through droplets when infected person coughs or sneezes, or via contaminated surfaces such as door handles. Incubation period believed to be up to 14 days. People may be able to infect others before symptoms appear



## People at risk

About two percent of people infected with virus have died. Disease can pose particular risk to elderly people and those with pre-existing medical conditions. People over 80 years of age have highest death rates



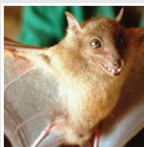
## Prevention

WHO recommends that people wash hands frequently, cover their mouth and nose when sneezing or coughing, and avoid close contact with those who are sick. WHO hopes to have vaccine in 18 months



## Global spread

About 99 percent of infections are in mainland China, and almost 96 percent of deaths have been in Hubei province and its capital Wuhan, where virus emerged in late 2019. At least 25 other countries have confirmed cases



## Source of virus

Believed to be food market in Wuhan that was illegally selling wild animals. Scientists think it may have originated in bats and passed to humans via intermediate species – possibly pangolins – although finding is not confirmed

\*Name is shortened version of coronavirus disease 2019

Source: Reuters

Pictures: AP, CDC, Flickr / Tina Franklin, Getty Images

© GRAPHIC NEWS