

Disney's cosmic Star Wars gamble

Disneyland's new billion dollar *Star Wars: Galaxy's Edge* attraction is its most immersive to date. A crew of over 4,000 people worked for more than five years to create the movie saga tie-in



Disney's **Imagineers** identify three main attractions: two rides, and planet **Batuu** itself



Star Wars: Rise of the Resistance: Disney's most ambitious and advanced ride. Visitors board transport ship which takes off and is captured by First Order Star Destroyer. **Build cost: \$77.9m** (opens later in 2019)

Millennium Falcon: Smuggler's Run: Simulator ride that puts six people in cockpit – two pilots, two gunners and two engineers. **Cost: \$55.7m**

Black Spire Outpost, planet Batuu

STAR WARS GALAXY'S EDGE
Disneyland

5.7 hectares

20m
65ft



X-wing*

Millennium Falcon* Cost: \$4.4m



Resistance encampment

Disneyland, Anaheim

Construction zone

Five restaurants, five shops: Exclusive products have "crafted" vibe and minimal packaging. On sale only in Batuu



TIE echelon*

First Order-controlled sector



Play Disney Parks app: Becomes **Star Wars Datapad** in Batuu. Guests can interact with droids or take on tasks

Living world: Actors play Batuu natives, Resistance fighters and First Order villains – and will interact with park guests

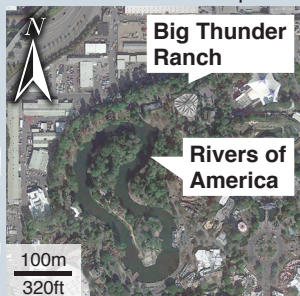
Walt Disney World, Orlando, Florida. Second *Star Wars: Galaxy's Edge* opens Aug 29



Parking/hotels

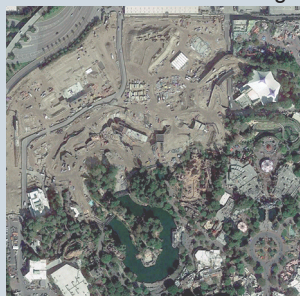
500m
1,640ft

Transformation: How parts of **Frontierland** and backstage areas were removed to make way for Star Wars



Big Thunder Ranch

Rivers of America



New layout for Rivers of America



Star Wars

Feb 2016: Big Thunder Ranch in Frontierland's northwest quadrant

Oct 2016: Big Thunder Ranch demolished, **Rivers of America** dammed

Dec 2017: Rivers of America (original 1955 attraction) reduced in size

Jun 2018: Galaxy's Edge attraction starts to take shape