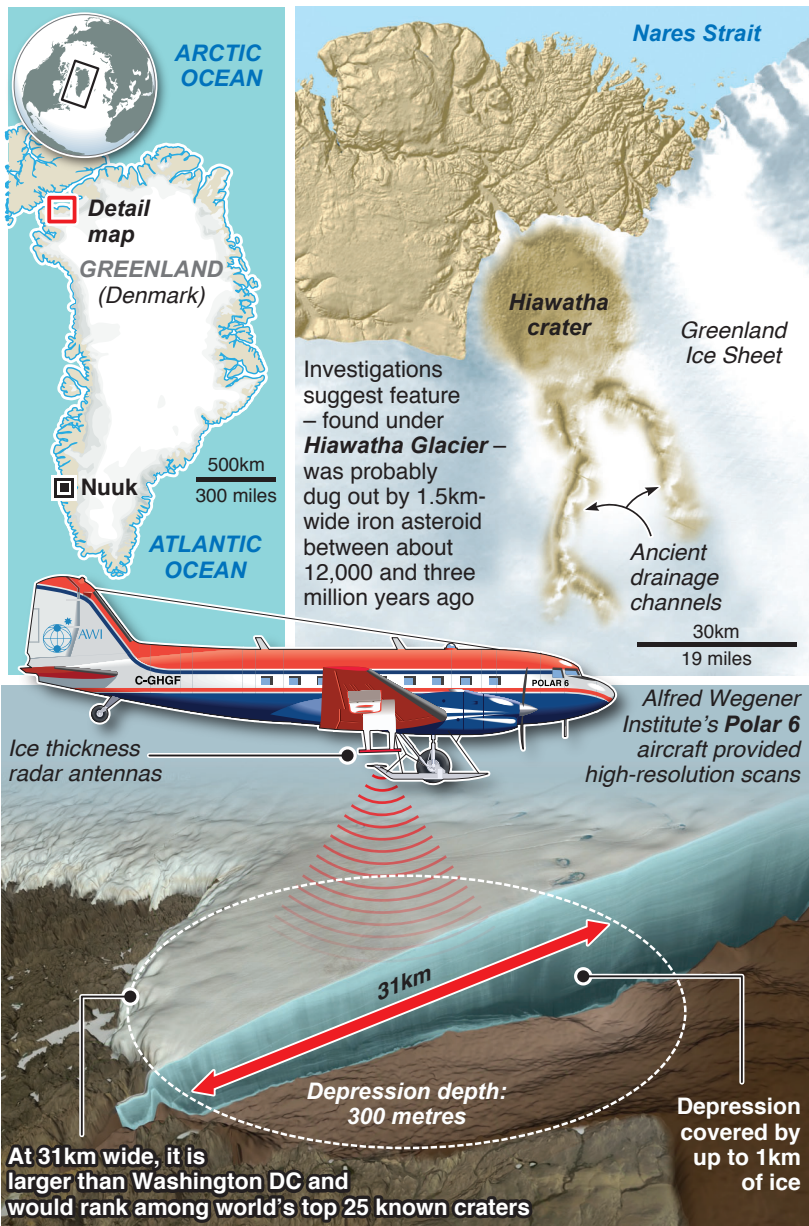


# Impact crater found under Greenland ice

What could be a large meteorite impact crater has been discovered beneath the Greenland ice sheet. If confirmed, it would be the first ever located below a continental ice sheet



Pictures: NASA/Jefferson Beck, Nasa/Cryospheric Sciences Lab/Natural History Museum of Denmark

Sources: Science Advances, NASA's Goddard Space Flight Center

© GRAPHIC NEWS