

# Drone deliveries on the rise in Reykjavik

**Aha**, an Icelandic fast-food delivery service, is using autonomous drones to fly produce to customers across almost half of the capital



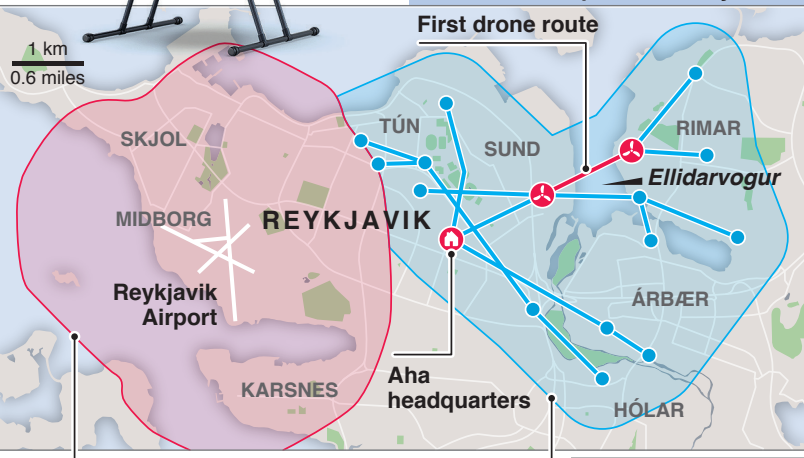
**Load:**  
Up to  
3kg

New  
flight  
paths

**Drone:** Modified *DJI Matrice 600*

■ **2017:** Aha's first drone route across *Ellidavogur* inlet shaves 16 minutes off typical 20+ minute delivery time to eastern suburbs\*

■ **2018:** More routes granted by *Icelandic Transport Authority*<sup>†</sup>



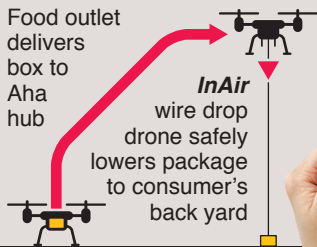
**Closed airspace:**  
Drones cannot enter airport's 2km boundary

**Coverage:** Drones can deviate by up to 700m either side of fixed routes

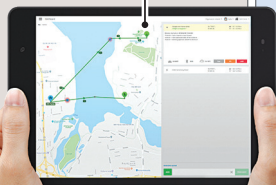
## DRONE DELIVERY METHOD

Food outlet delivers box to Aha hub

**InAir**  
wire drop  
drone safely  
lowers package  
to consumer's  
back yard



Cloud-based Flytrex Control Center



\*Average distance meal is delivered in Reykjavik (low-rise, spread-out city, subdivided by large bay and several rivers) is about 7km †Risk analysis being conducted to add even more routes

Sources: Aha, The Economist, Flytrex, Robotics & Automation Pictures: Flytrex © GRAPHIC NEWS