

Chemical threat to killer whales

Over 50 percent of killer whales are at risk of extinction from toxic chemicals banned decades ago but which are still leaching into the seas

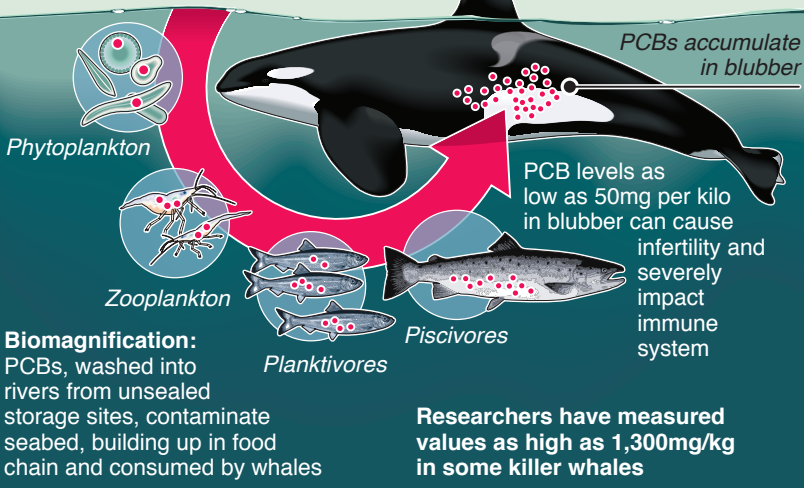
Polychlorinated biphenyls (PCBs): Banned in 1970s due to toxic effect on humans and animals but still in use in paints, electrical equipment and construction until 1980s

Killer whale (*Orcinus orca*)

Weight: **Up to 10 tonnes**

Lifespan: **30-90 years**

Length: **Up to 10m**



HIGH PCB RISK – Populations that may collapse within 30-50 years

Northeast Pacific Bigg's
Population size: 521

Greenland
Pop. unknown

UK
9

Japan
Unknown

Hawaii
101

Strait of Gibraltar
36

Brazil
Unknown

Canary Islands
Unknown

Habitat range