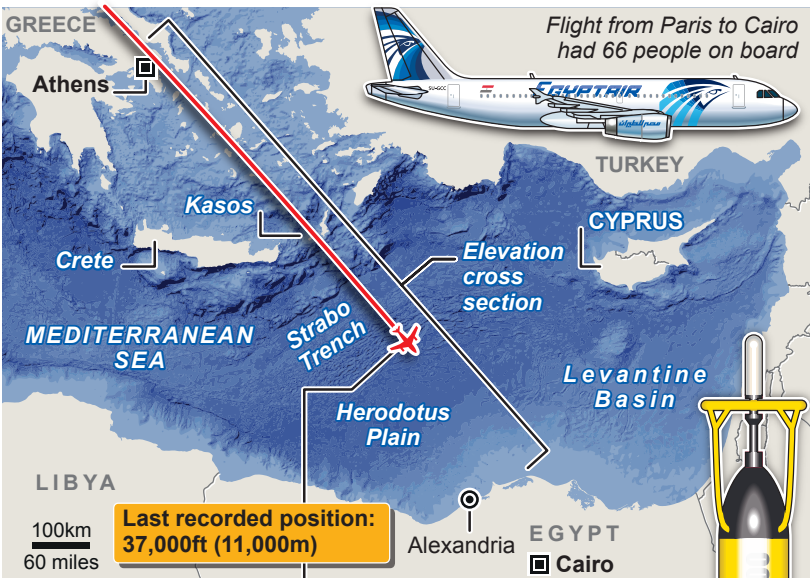
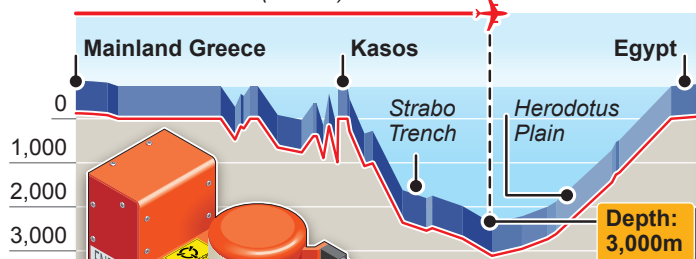


# Signals detected in EgyptAir search

The French navy hydrographic survey ship Laplace has picked up signals believed to be from one of the black boxes of EgyptAir flight MS804. The ship is using deep-water Detector-6000s to locate the flight recorders' signals

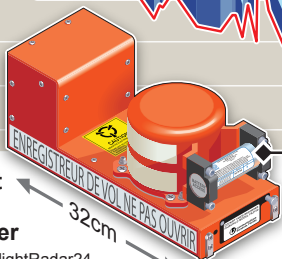


**Elevation cross section (metres)**



**Cockpit Voice Recorder**

Sources: FlightRadar24, Alseamar, Google Earth



**ULB**

**DETECTOR-6000**

Can pick up "pings" from **ULB (underwater locator beacon)** over distances of up to 5km



© GRAPHIC NEWS