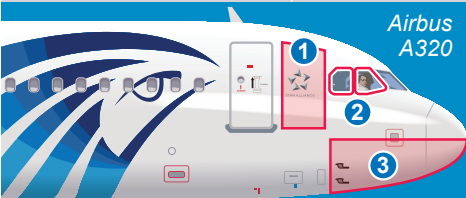
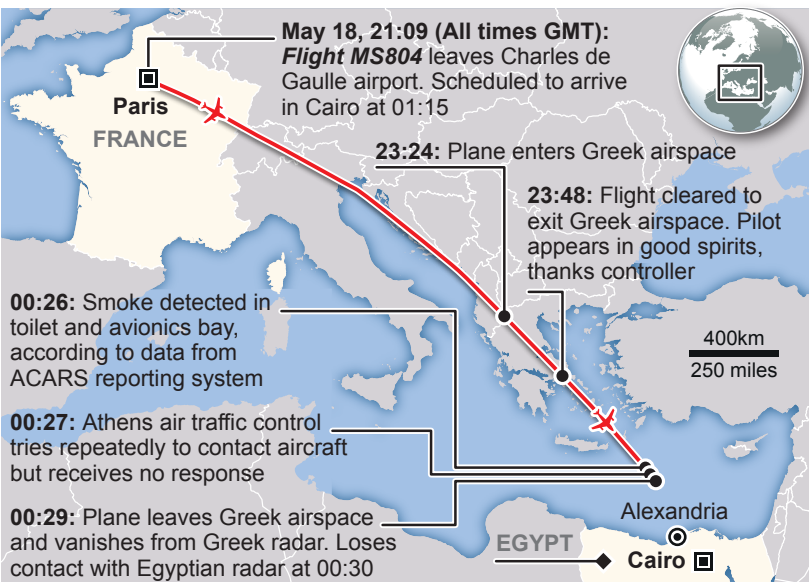


Search for clues in EgyptAir crash



- 1** Lavatory
- 2** Right cockpit windows: Gave off heat alarm
- 3** Avionics bay: Contains electronics and computers

FINAL MOMENTS

■ Greek investigators say just before plane vanished from radar it turned 90 degrees left, then 360 degrees right, dropping from 37,000ft to 15,000ft and then 10,000ft

But Egyptian authorities say plane was flying at normal altitude of 37,000 feet when it vanished from radar

ON-BOARD EXPLOSION

■ Egyptian forensics expert has dismissed suggestion that small size of body parts retrieved so far indicate explosion on board

PASSENGERS

■ Three European security officials say flight's passenger manifest – leaked online – contains no known names on current terror watch lists