

# Over one in 10 Syrians killed or injured

More than 11.5 percent of Syria's population have been killed or injured since the bloody crisis in the country erupted in March 2011, according to a new report by the Syrian Centre for Policy Research (SCPR)



*Fellow Syrians carry wounded in Aleppo*

**470,000**

Number of conflict-related deaths – far higher than figure of 250,000 used by UN until it stopped collecting statistics in 2014

**1.88 million**

Expected number of wounded people by end of 2015

**6.36m**

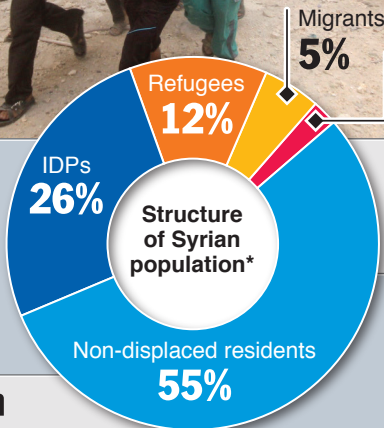
Number of individuals continuing to live in Syria as internally displaced persons (IDPs) – up from 5.65 million at end of 2014

**3.11m**

Estimated total refugee population by end of 2015. Majority of refugees hosted by Turkey, Lebanon and Jordan

**1.17m**

Projected number of migrants leaving Syria by end of 2015



Conflict-related deaths  
**2%**

**21 percent**

Real decrease in population since 2010\*

**55.4 years**

Estimated life expectancy in 2015 (down from 70.5 years in 2010)

**85.2%**

Percentage of people expected to be living in poverty by end of 2015. More than 69 percent living in extreme poverty, unable to secure basic food and other items necessary for survival

**45.2%**

Percentage of school-age children no longer attending school. Loss of schooling at all educational levels by end of 2015 represents 24.5m lost years

**\$254.7bn**

Estimate of accumulated total economic loss at end of 2015

\*Figures based on counterfactual population in 2015 (if Syrian conflict had not emerged)

Source: SCPR

Picture: Getty Images

© GRAPHIC NEWS