

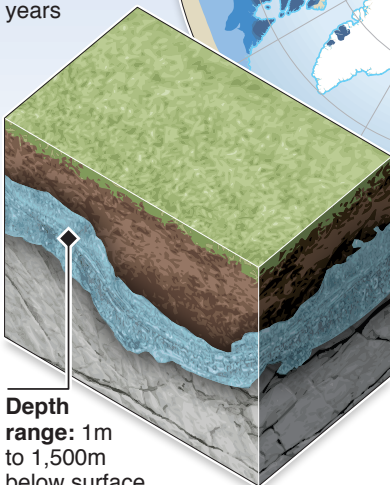
Permafrost thawing in Alaska

A leading geophysicist believes that recent temperature rises in Alaska indicate that the permafrost will thaw in some parts by 2070, releasing methane gas into the atmosphere and exacerbating climate change

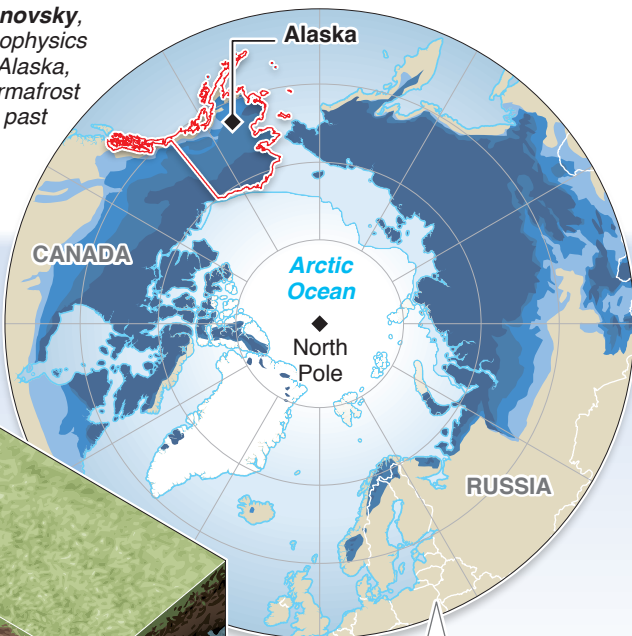
Vladimir Romanovsky,
Professor of Geophysics
at University of Alaska,
says rises in permafrost
temperatures in past
four years have
convinced him
global warming
is real

WHAT IS PERMAFROST?

Frozen soil or
rock remaining
below 0°C for
at least two
years



Depth
range: 1m
to 1,500m
below surface



- Continuous permafrost
- Discontinuous permafrost
- Sporadic permafrost
- Isolated patches

Thaw could release methane – powerful greenhouse gas – frozen in permafrost, potentially doubling amount of carbon currently in atmosphere