

# Wimbledon 2015: Women's preview

1 Rank



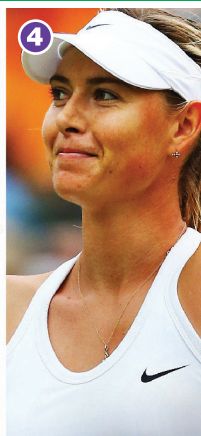
**1** **Serena Williams (USA)** Age: 33

Five-time champion aiming for calendar Grand Slam after Australian Open and Roland Garros titles. Suffered shock early exits in recent years, losing in third round in 2014



**3** **Simona Halep (ROM)** 23

Hoping to bounce back after crashing out in second round at Roland Garros. Reached semi-finals at Wimbledon in 2014, losing out to fellow starlet **Eugenie Bouchard**



**2** **Petra Kvitová (CZE)** 25

Defending champion looking to claim third triumph on her favourite surface. Only player to have beaten **Williams** in 2015, with superb straight sets victory on clay in Madrid

**4** **Maria Sharapova (RUS)** 28

Set to challenge for sixth Slam despite frustrating season to date. Lost to **Kvitová** in 2011 final, her best result on grass since landing first major victory on Centre Court in 2004

PLAYER RECORD	Williams	Kvitová	Halep	Sharapova
2015 win-loss	32-1	24-7	32-8	29-6
2015 titles	3	2	3	2
Career titles	67	16	11	35
Grand Slams	20	2	0	5