



Saudi Arabia's high-tech fence

Saudi Arabia has unveiled a 900km state-of-the-art fence along its border with Iraq to ensure the war waged by so-called Islamic State doesn't spill across its frontier. The \$3.4 billion Northern Border Security Project was built by Munich-based Airbus Defence and Space

Border barrier: 40 watchtowers equipped with Airbus SPEXER 2000 radars and day/night cameras, seven command-and-control (C2) centres, 38 separate communication towers and 32 military response stations



Response stations equipped with heli-pads

Barriers: Twin chainlink fences with razor wire, 100m apart, separated by concertina fence

Sand berms: Embankments designed to slow infiltrators

Underground movement sensors: Trigger silent alarms

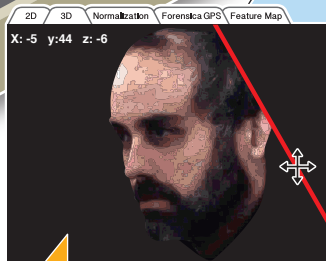
Network: 1,450,000 metres of fibre optic cable connects C2 centres to Ministry of Interior

SPEXER 2000 radar

Also known as TRGS Sec Detection Ranges

Pedestrian (slow moving)	18km
Light vehicle	22km
Truck	36km
Light aircraft	27km
Low-level helicopter	36km

Surveillance Reconnaissance Vehicles: 10 units, each fitted with SPEXER radar, video, thermal and night-vision cameras



ForensicaGPS: System linked to 3D face recognition software

