

# Next phase in search for Flight MH370

Three ships will use “towfish” – underwater vessels equipped with sonar to create high-resolution images of the ocean floor – in the latest stage of the search for missing Malaysia Airlines Flight 370

## General search area

## Search zone

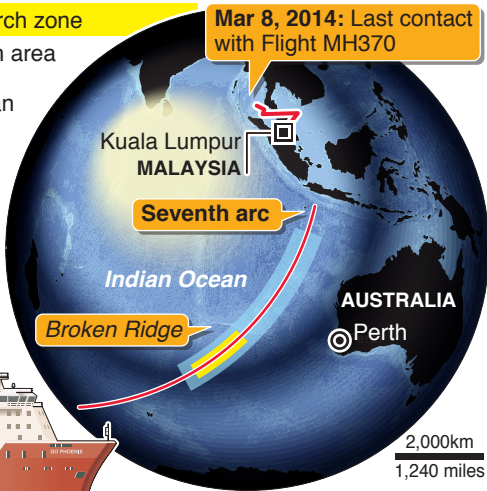
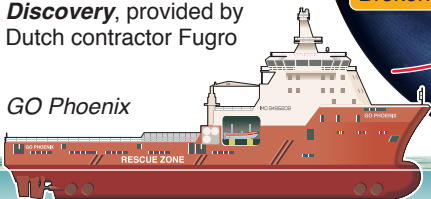
Mar 8, 2014: Last contact with Flight MH370

■ **Search zone:** 60,000-sq-km area lies along what is known as **seventh arc** – stretch of ocean where investigators believe aircraft ran out of fuel and crashed

■ **Ocean depth:** Ranges from 600m to 6,500m

■ **The ships:** **GO Phoenix**, provided by Perth-based GO Marine, **Equator** and **Discovery**, provided by Dutch contractor Fugro

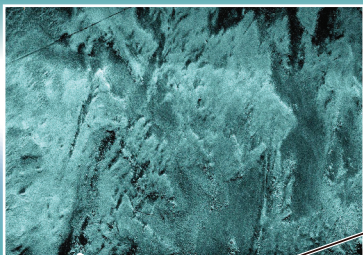
GO Phoenix



■ **ProSAS-60 towfish:** Dragged slowly through water, 100m above seabed

Neutrally buoyant sled carries sonar  
Length: 4m

2.5-5km/h



Cable – up to 10,000m long

Depressor weight cuts ocean turbulence

■ **Synthetic aperture sonar (SAS):** combines multiple acoustic pings to form seafloor imagery at 10cm by 10cm resolution

■ **Maximum range:** Up to 1,500m per side. Can cover 190-sq-km area per day