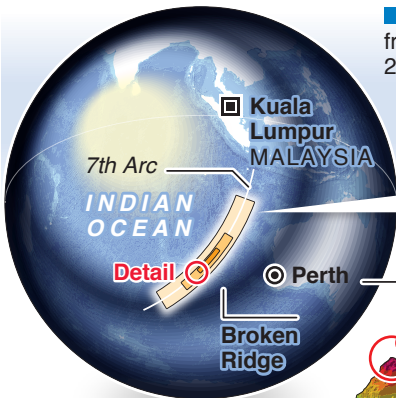


# Plane search survey reveals difficult terrain

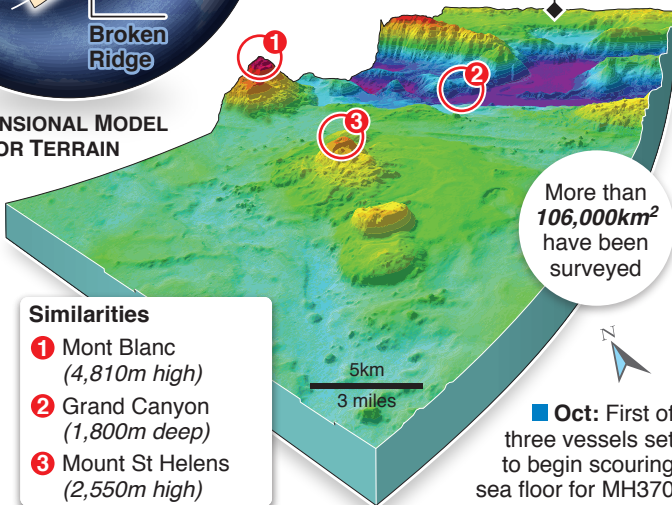
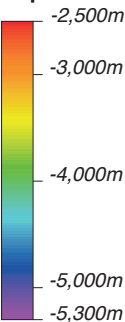
The area where Malaysia Airlines flight MH370 may have gone down is full of previously unmapped trenches and extinct volcanoes, new data shows

■ **Mar 8:** Flight **MH370** vanishes en route from Kuala Lumpur to Beijing, with 239 passengers on board



- Priority search area
- Medium search area
- Wide search area

**THREE-DIMENSIONAL MODEL OF SEA FLOOR TERRAIN**  
**Depth**



## Similarities

- ❶ Mont Blanc (4,810m high)
- ❷ Grand Canyon (1,800m deep)
- ❸ Mount St Helens (2,550m high)

More than **106,000km<sup>2</sup>** have been surveyed

■ **Oct:** First of three vessels set to begin scouring sea floor for MH370