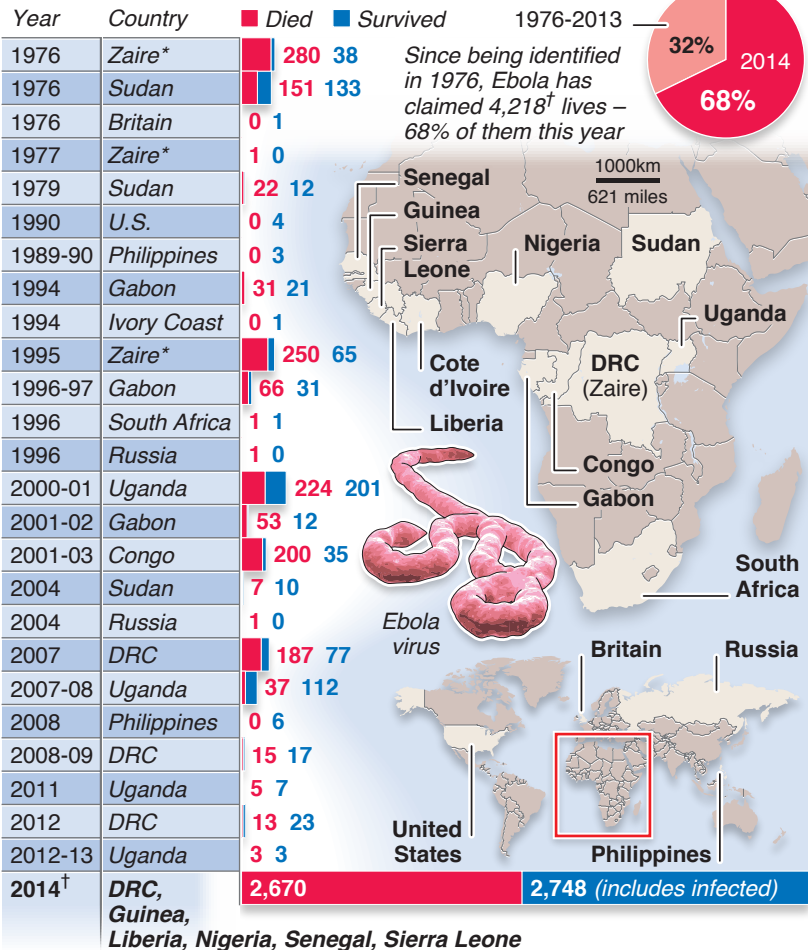


# Ebola outbreak accelerating rapidly

As many as 500,000 people could be infected with the Ebola virus by the end of January, according to the *Centers for Disease Control and Prevention*

## HISTORY OF CONTAGION



Sources: CDC (Centers for Disease Control and Prevention), WHO, healthmap.org, wire agencies

\*became Democratic Republic of Congo (DRC) in 1997

<sup>†</sup>as of Sep 21

© GRAPHIC NEWS