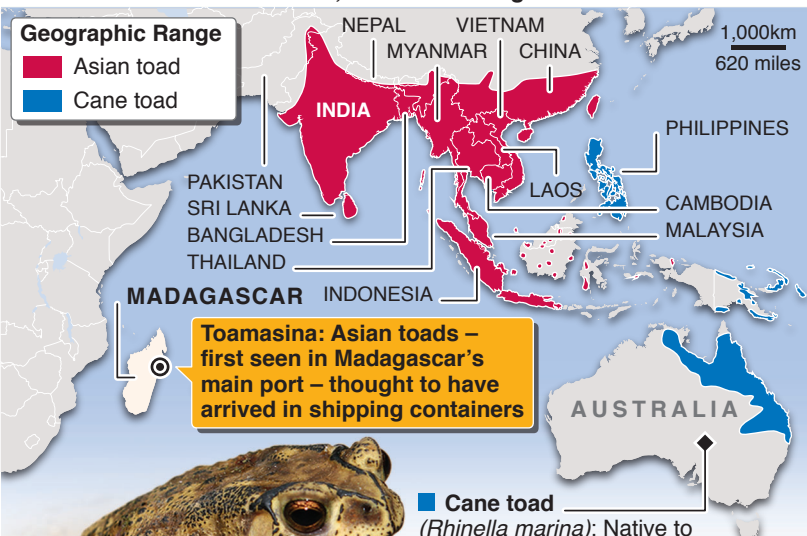


Toads pose ecological disaster in Madagascar

The unique wildlife of Madagascar is facing an invasion of toxic toads that could devastate the island's native species. The Asian toad is a relative of the Cane toad, which has ravaged Australia's wildlife

Geographic Range

- Asian toad
- Cane toad



■ Cane toad

(*Rhinella marina*): Native to Central and South America. Introduced to Australia in 1935 to control pests, spread across country, devastating native animal populations

■ **Asian toad** (*Duttaphrynus melanostictus*): Produces toxins that are deadly to animals that prey on them. Could spread diseases to other amphibians, contaminate drinking water, and even transmit parasites to humans

