

Shipwreck off Haiti may be Santa Maria

A shipwreck found off the north coast of Haiti could be the 500-year-old remains of the *Santa Maria*, the flagship of Christopher Columbus's famed first expedition to the New World



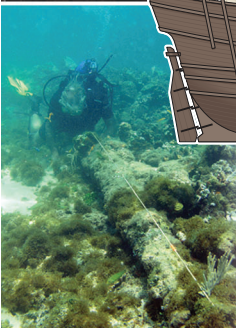
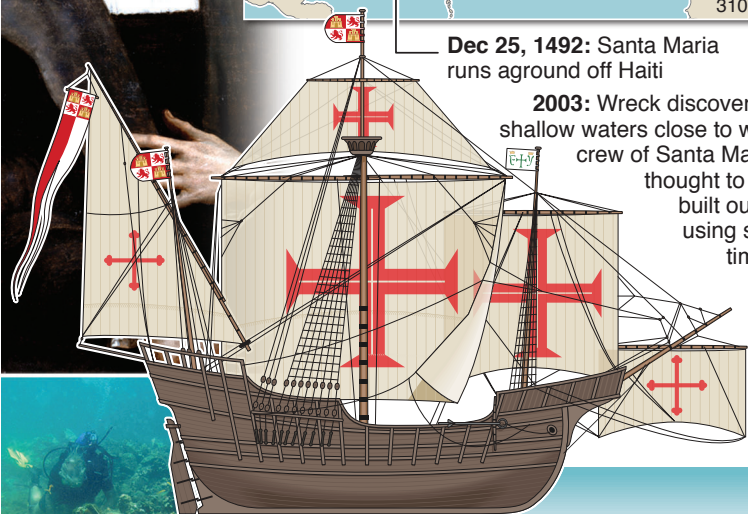
ROUTE OF VOYAGE

Aug 3, 1492: *Santa Maria*, with sister ships *La Niña* and *La Pinta*, leave Spain



Dec 25, 1492: *Santa Maria* runs aground off Haiti

2003: Wreck discovered in shallow waters close to where crew of *Santa Maria* is thought to have built outpost using ship's timbers



ARCHAEOLOGICAL EVIDENCE

- Wreck matches length of *Santa Maria*'s 36m keel
- Stones found at wreck site match quarry in Spain that provided ballast for Columbus's ships
- Cannon found at site during initial inspection in 2003 – but since looted – is of 15th century design