

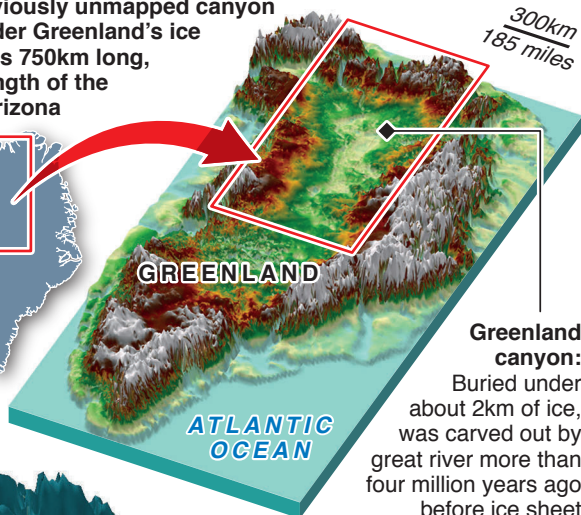
Mega-canyon found beneath Greenland ice

A colossal and previously unmapped canyon has been found under Greenland's ice sheet. The canyon is 750km long, almost twice the length of the Grand Canyon in Arizona



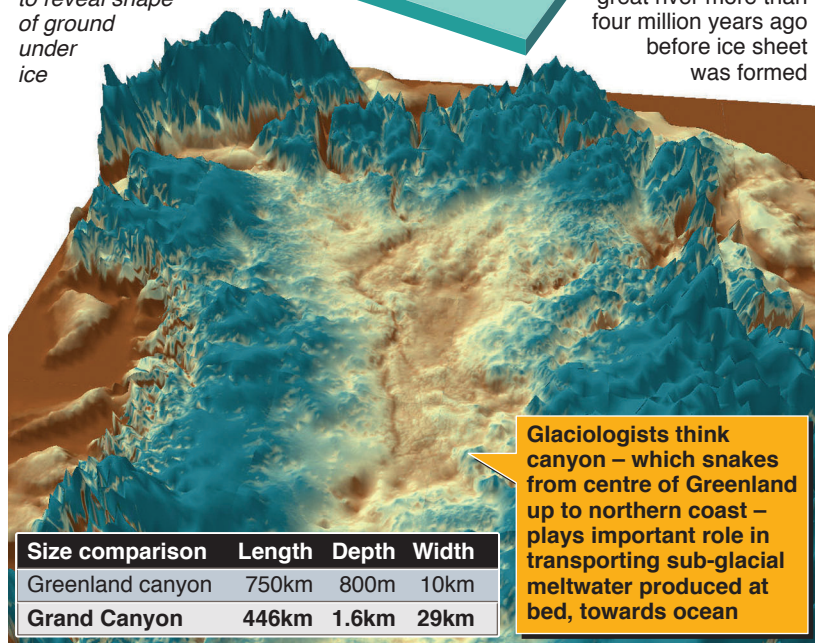
GREENLAND

Scientists used ice-penetrating radar scanners flown by aircraft to reveal shape of ground under ice



Greenland canyon:

Buried under about 2km of ice, was carved out by great river more than four million years ago before ice sheet was formed



Glaciologists think canyon – which snakes from centre of Greenland up to northern coast – plays important role in transporting sub-glacial meltwater produced at bed, towards ocean

Size comparison	Length	Depth	Width
Greenland canyon	750km	800m	10km
Grand Canyon	446km	1.6km	29km