

Closest U.S. presidential races



1960

Popular vote (%)

Electoral vote

John F. Kennedy 49.7

303

Richard Nixon 49.6

219

Other

0.7

Competitive race in 20 states where margin of victory for either candidate was narrower than five percentage points. At the end, Kennedy scraped victory by grabbing just 113,000 votes more than Nixon out of 68 million cast



1968

Richard Nixon 43.4

301

Hubert Humphrey 42.7

191

G. Wallace 13.5

46

With Vietnam War raging and country divided by civil rights movement, Nixon narrowly beat Humphrey in election marked by strong third-party showing from George Wallace, running on his opposition to racial integration



1976

Jimmy Carter 50.1

297

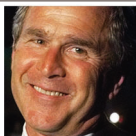
Gerald Ford 48.0

240

Other

1.9

Carter, running as Washington outsider, won narrowly over Ford, who was saddled with slow economy and paid political price for his pardon of Nixon over Watergate scandal. Ford won 27 states – most ever carried by losing candidate



2000

George W. Bush 47.87

271

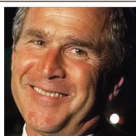
Al Gore 48.38

266

Other

3.75

Bush won election after 32-day drama that unfolded when election in Florida finished in near-tie. U.S. Supreme Court ruling stopped recount, naming Bush winner of Florida by slimmest of victories – just 537 ballots of six million cast



2004

George W. Bush 50.7

286

John Kerry 48.3

251

Other

1.0

Message from **Osama bin Laden** in which he claimed responsibility for 9/11 attacks, gave final boost to Bush, who had campaigned on national security, presenting himself as decisive leader and dismissing Kerry as “flip-flopper”