

Pre-1967 borders

# Palestinian Territories factfile

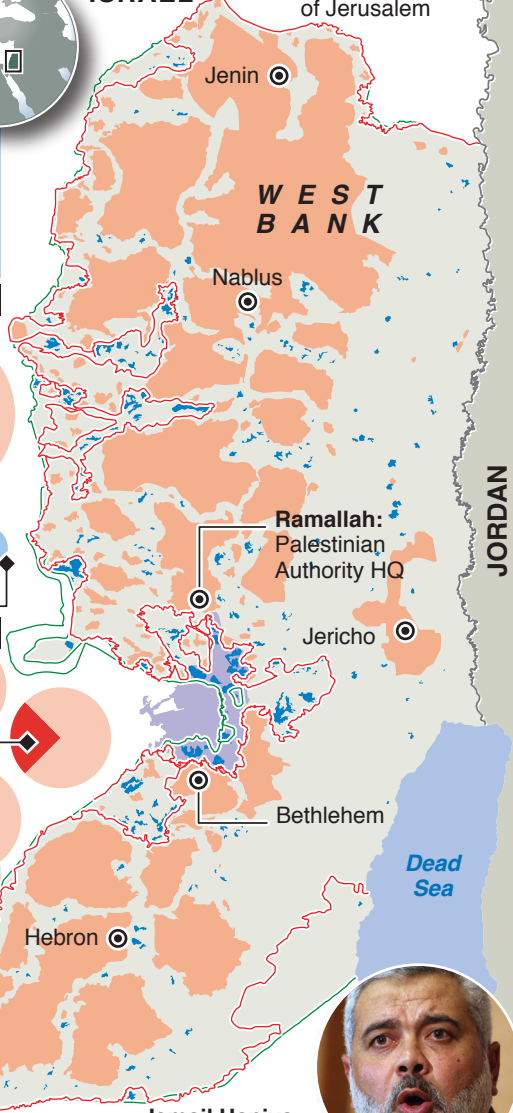


## WEST BANK TODAY

- West Bank barrier Built / planned
- Pre-1967 border

- Full Israeli control
- Palestinian or joint control
- Israeli settlements
- Municipal area of Jerusalem

## ISRAEL



## POPULATION (2011)

### Palestinians

West Bank: 2.6m

Gaza: 1.6m

Refugees in Arab world: 2.9m

7.1m

### Jewish settlers

West Bank: 270,000

East Jerusalem: 190,000

## ECONOMY

### Unemployment

(first half of 2011)

West Bank: 15%

Gaza: 25%

### Below poverty line: 39%

(\$3.1 a day, 2009)

## POLITICS



### Mahmoud Abbas

President of Palestinian Authority and leader of Fatah, which rules West Bank

Wants UN membership for Palestinian state based on pre-1967 lines, including Gaza, West Bank and east Jerusalem

### Ismail Haniya

Leader of Hamas, which rules Gaza Strip

Says Fatah does not have right to sacrifice Palestinian rights but will not seek to disrupt UN bid

