

E. coli outbreak caused by new strain

The deadly E. coli outbreak that has killed 18 people and infected over 1,600 in Europe is a completely new strain, a mutant form of two different E. coli bacteria with very aggressive genes. Almost all cases are linked to people who live in or have recently travelled to northern Germany



New strain:
Contains genes from two distinct groups of *enteroaggregative E. coli* (EAEC) and *enterohaemorrhagic E. coli* (EHEC)

OUTBREAK NUMBERS

Denmark
Cases: 14

U.S.
Cases: 2

Netherlands
Cases: 8

Norway
Cases: 1

Sweden
Dead: 1
Cases: 43

Germany
Dead: 17
Cases: More than 1,500

Austria
Cases: 2

UK
Cases: 7

France
Cases: 6

Switzerland
Cases: 2

Spain
Cases: 1

Symptoms include
bloody diarrhoea
and fever

Cattle carry toxin
in gut which
is shed in
faeces

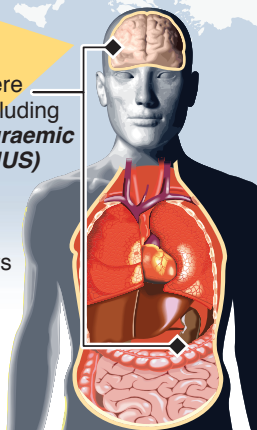
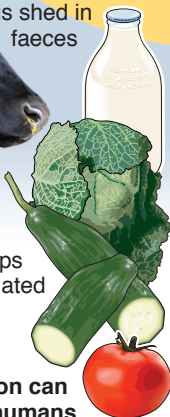
Effects: Severe
infections, including
*haemolytic uraemic
syndrome (HUS)*

– potentially
lethal kidney
complication
which destroys
red blood
cells and
can affect
central
nervous
system

Contamination:

Bacteria can be
transferred to crops
through contaminated

manure, irrigation or
slurry spraying, or
during processing and
packaging. **Transmission can
also occur between humans**



Health advice: Wash, peel or cook
fruit and vegetables before eating.
Wash hands regularly