

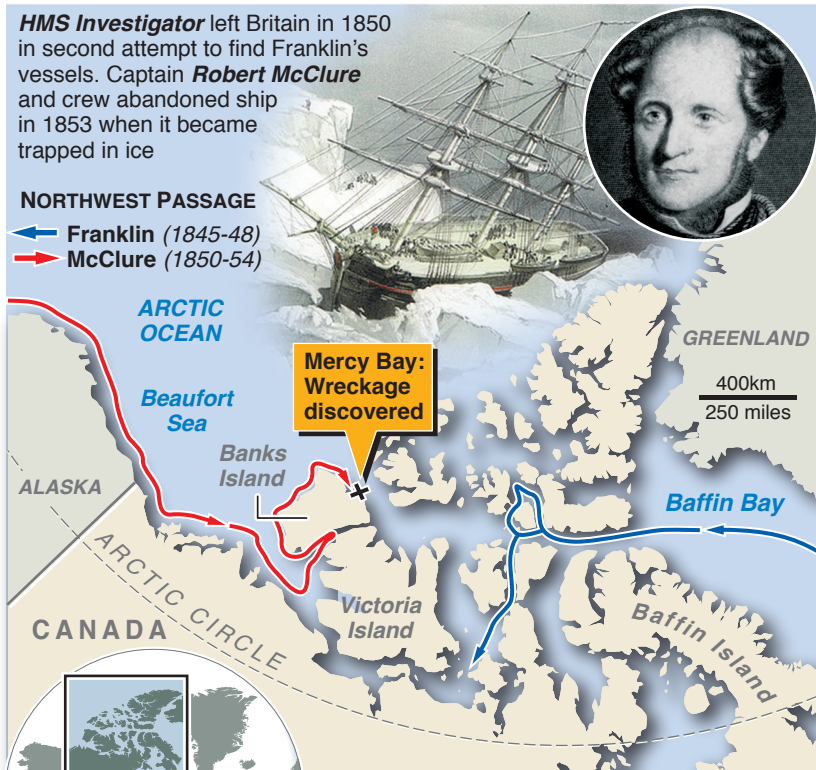
Canadian archaeologists find lost ship in Arctic

A British ship credited with discovering the western entrance to the Northwest Passage, has been found in the Canadian Arctic. The ship was abandoned 150 years ago while searching for Sir John Franklin's 1845 expedition, itself lost during a mission to discover the fabled route

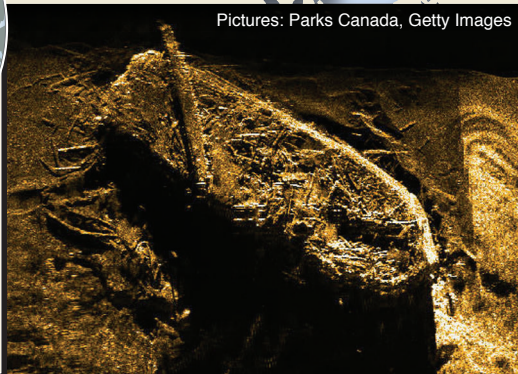
HMS Investigator left Britain in 1850 in second attempt to find Franklin's vessels. Captain **Robert McClure** and crew abandoned ship in 1853 when it became trapped in ice

NORTHWEST PASSAGE

← Franklin (1845-48)
→ McClure (1850-54)



Icy waters have helped to preserve ship, which sits upright on ocean floor about 11 metres deep, not far from spot where it was last documented in 1854



Pictures: Parks Canada, Getty Images