

# Emissions opportunity in economic downturn

The global economic crisis may have created an opportunity to stabilise greenhouse gas emissions. Carbon dioxide output has fallen by up to three percent in 2009 alone, and targeting a cap of 450 parts per million – at a cost of \$10.5 trillion – could limit global warming to just 2°C

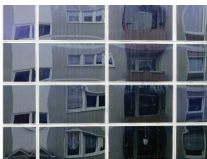
## 450 SCENARIO: INVESTING FOR THE FUTURE

Cost 2010-2030: \$10.5 trillion

Transport \$4.7tn Buildings \$2.5tn Industry \$1.1tn Power \$1.7tn



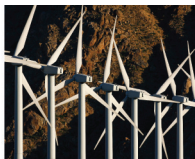
Purchase of more efficient vehicles



Including appliances and equipment



More efficient processes, motors



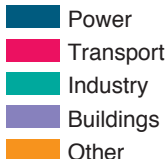
Plus **\$0.4tn** for biofuel production

## PROJECTED GLOBAL EMISSIONS

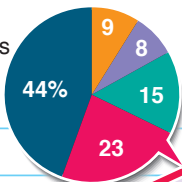
(energy-related CO<sub>2</sub>, tonnes)

— If current policies are pursued  
— 450 Scenario (target 450ppm)

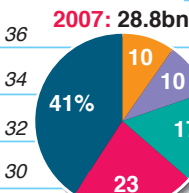
% proportion of emissions by source



**2030: 40.2bn**  
Greenhouse gas concentration of 1,000ppm could cause temperature to rise by 5°C



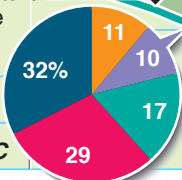
**2020: 34.5bn**  
Current policies would allow emissions to continue to rise



**2020: 30.7bn**  
Fossil fuel use peaks by 2018

**2030: 26.4bn**  
**450 Scenario limits rise to manageable 2°C**

Efficiency savings:  
End-user  
Power-plant  
Renewable energy  
Biofuel  
Nuclear  
Carbon capture and storage



Due to rounding, percentages may not total 100%

2007 2010 2015 2020 2025 2030

Source: International Energy Agency

Pictures: Getty Images

© GRAPHIC NEWS