

# Pittsburgh steel themselves for Cardinals fight

## PITTSBURGH STEELERS

Targeting record sixth Super Bowl victory

Raymond James Stadium, Tampa Bay, Florida

## ARIZONA CARDINALS

First franchise appearance in NFL showpiece



ROAD TO TAMPA BAY  
Wild Card Weekend

Atlanta 24-30 Arizona

Division Championships

Pittsburgh 35-24 San Diego

Carolina 13-33 Arizona

Conference Championships

Pittsburgh 23-14 Baltimore

Philadelphia 25-32 Arizona

**DEFENCE FORGED IN PENNSYLVANIA:** Coach **Mike Tomlin** has assembled best defence in NFL, masterminded by defensive co-ordinator **Dick LeBeau**

**DESERT HEAT:** Coach **Ken Whisenhunt** knows his opponents only too well, having helped Steelers win Super Bowl in 2005 as offensive coach

| Steelers     | DEFENCE (Conceded) |     |  | Cardinals |             |
|--------------|--------------------|-----|--|-----------|-------------|
| 13.4         |                    |     |  | 25.7      | Points/game |
| 4.5          |                    |     |  | 5.3       | Yards/play  |
| Passing: 162 | 76                 | 105 |  | 225       | Yards/game  |
|              | Rushing            |     |  |           |             |

| Steelers     | OFFENCE |    |  | Cardinals |             |
|--------------|---------|----|--|-----------|-------------|
| 22.5         |         |    |  | 27.5      | Points/game |
| 4.9          |         |    |  | 5.9       | Yards/play  |
| Passing: 206 | 106     | 79 |  | 286       | Yards/game  |
|              | Rushing |    |  |           |             |

**Key man: James Harrison**

Steelers' blitz, led by **Defensive Player of the Year** Harrison, will provide stern test for Cardinals' quarterback's speed and quick-thinking under pressure

**GETTING PAST STEELERS' DEFENCE**  
If Cardinals are to win **Vince Lombardi** trophy they will have to break down Steelers' suffocating defence

**Wide receivers:** Make deep or wide runs to split defence

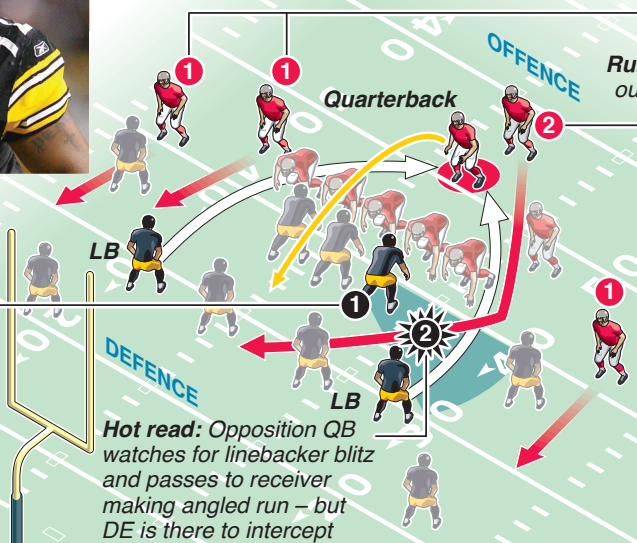
**Running back:** Makes angled run to outpace opposition **linebacker (LB)**

**Key man: Larry Fitzgerald**  
Cardinals one of top passing teams in 2008 season – and in Fitzgerald they have best **wide receiver** around

### STEELERS' ZONE-BLITZ

Allows **defensive end (DE)** linemen to protect zones left open by **linebackers**, who either blitz QB or force him to throw into area that is covered

**Disguise:** DE appears to move into tackle but instead retreats to cover zone to rear



### Ben Roethlisberger

### QUARTERBACK HEAD-TO-HEAD

### Kurt Warner

|               |       |      |
|---------------|-------|------|
| Pass attempts | 29.3  | 37.4 |
| Completed     | 17.56 | 25.1 |
| Yards         | 206   | 286  |
| TD passes     | 1.02  | 1.88 |
| Interceptions | 0.94  | 0.88 |

Statistics per game (2008)