

# Arctic map highlights disputes hotspots

British scientists have unveiled what they say is the first authoritative map to show areas in the Arctic that could become embroiled in maritime border disputes. The map is designed to help world powers as they battle over rights to the remote but potentially lucrative area

## UNITED STATES

- Territorial waters\* and \*\*EEZ
- Potential continental shelf beyond 200nm

## CANADA

- Territorial waters and EEZ
- Potential continental shelf beyond 200nm

## DENMARK

- Territorial waters and EEZ
- Potential continental shelf beyond 200nm

## RUSSIA

- Territorial waters and EEZ
- Claimed continental shelf beyond 200nm

## NORWAY

- Territorial waters and EEZ
- Claimed continental shelf beyond 200nm

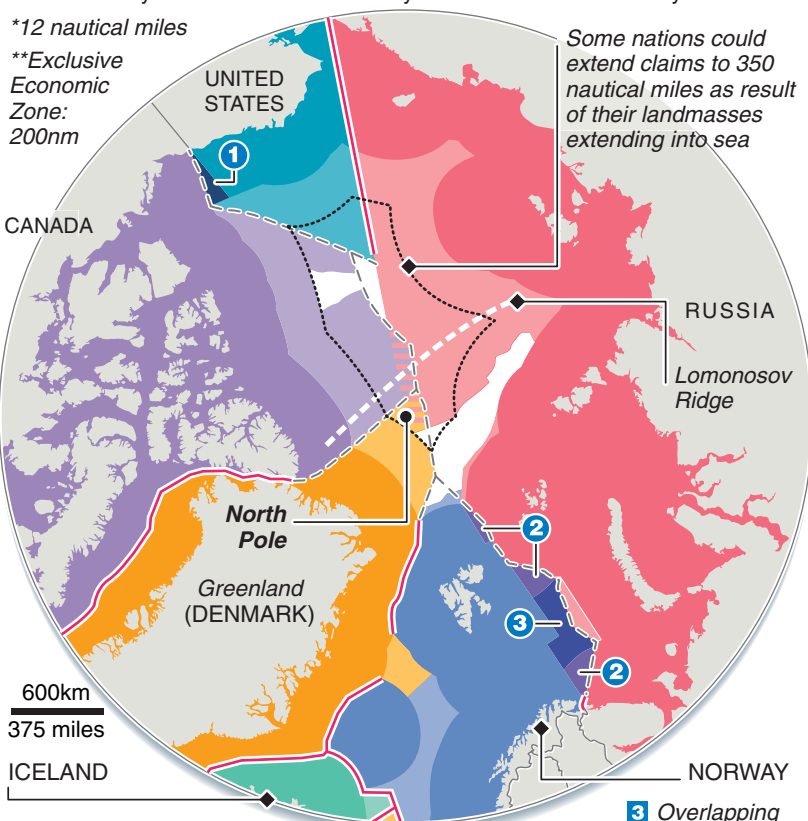
## ICELAND

- Territorial waters and EEZ
- Claimed continental shelf beyond 200nm

\*12 nautical miles

\*\*Exclusive Economic Zone: 200nm

Some nations could extend claims to 350 nautical miles as result of their landmasses extending into sea



600km  
375 miles

ICELAND

NORWAY

- Agreed borders
- Median line

**1** Overlapping U.S. / Canada EEZ

**2** Overlapping Norway / Russia EEZ

**3** Overlapping Norway EEZ / Russia claimed continental shelf beyond 200nm