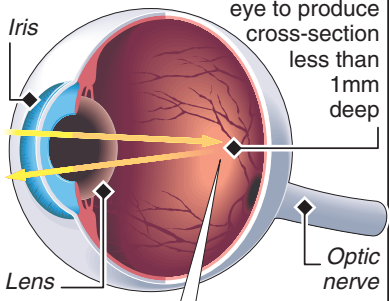


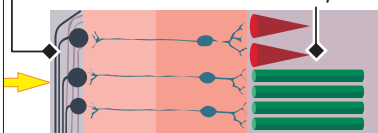
Quick scan for MS

A quick eye scan could offer cheap, painless monitoring of the nerve-wasting disease multiple sclerosis. Scanning nerve fibres of the retina allows detection and measurement of brain shrinkage, a marker of disease progression

Retina: Light bounced off back of eye to produce cross-section less than 1mm deep



Retinal nerve fibre layer (RNFL) at inner surface *Photoreceptors*



Thickness of RNFL reveals extent of damage to nerve cells