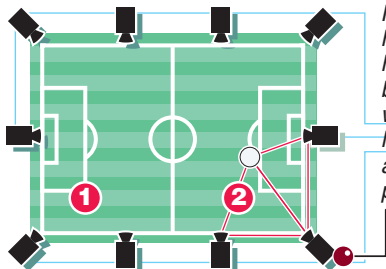


# Hawk-Eye to debut in Premier League

After its introduction at Wimbledon, the controversial Hawk-Eye electronic line-calling system will undergo trials in the Premier League this season in goal-mouth incidents to decide whether the ball has crossed the line

## HAWK-EYE OFFICIATING SYSTEM



### ***Cameras:***

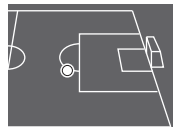
*Multiple high-resolution, high-speed, black-and-white cameras located around pitch*

### **IMAGE PROCESSING**

Over 2,000 pictures per second from each camera combined in **control computer**



## SPOT THE BALL

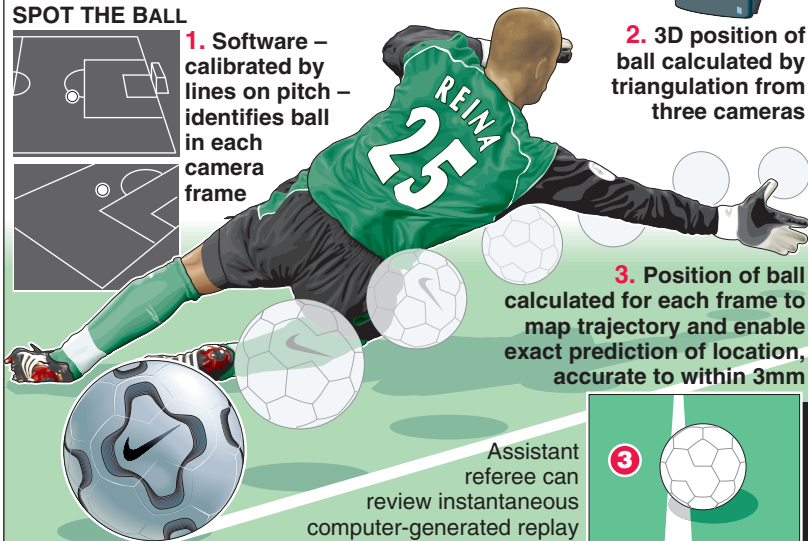


**1.** Software – calibrated by lines on pitch – identifies ball in each camera frame



**2.** 3D position of ball calculated by triangulation from three cameras

**3.** Position of ball calculated for each frame to map trajectory and enable exact prediction of location, accurate to within 3mm



Assistant referee can review instantaneous computer-generated replay

