

# Impact of 34 days of fighting

The conflict between Israeli troops and Hezbollah guerrillas, in which both sides claim to have been the victor, has left nearly 1,270 people dead – 1,110 in Lebanon and 157 on the Israeli side. An estimated 300,000 Israelis and about 1 million Lebanese, or a quarter of the population, have been displaced

## CASUALTIES

**Lebanon:** Civilians killed At least **1,069**

*Wounded* At least **3,700**

Lebanese army and police killed **35**

Hezbollah killed, according to Israel **530**

*Acknowledged by Hezbollah* **80**

**Israel:** Civilians killed **40**

*Wounded* **1,000**

Military personnel killed **117**

*Wounded* **450**

**UN personnel:** One each from **6**

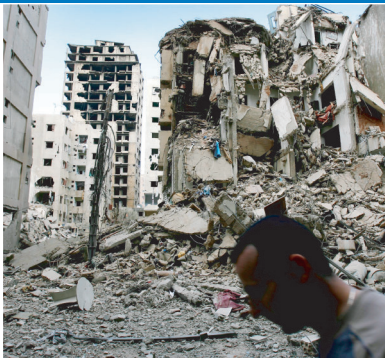
Austria, Canada, China, Finland,  
two UN workers from Nigeria

## DISPLACED

**Lebanon** Around **900,000**

**Israel** Around **300,000**

Sources: IDF, UNHCR, Lebanon environment ministry



## DESTRUCTION

**Lebanon:** Lebanese govt. **\$2.5bn**

*Total includes \$404m (transport);  
\$208m (power); \$190m (industry);  
\$99m (telecoms); \$74m (water);  
\$16m (military installations)*

**Israel:** Bank of Israel **\$1.5bn**

## ENVIRONMENT

Up to **15,000 tonnes** of heavy fuel oil spilled onto coast following Israeli bombing of Jiyeh power station. Spill, estimated to cost at least **\$100 million** to clean up, is biggest ecological crisis in Lebanon's history

Picture: Associated Press © GRAPHIC NEWS