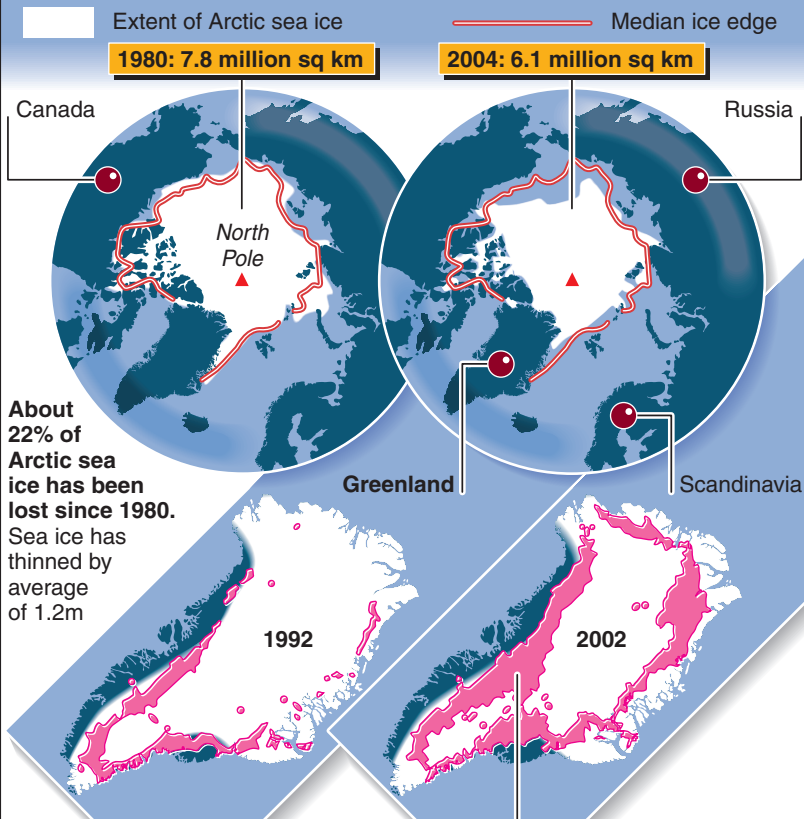


Arctic ice sheet in retreat

Rising concentrations of greenhouse gases could result in an increase in average global temperature of more than two degrees Celsius, a major scientific report claims. This could trigger the melting of the Greenland ice sheet, causing sea levels to rise by seven metres over 1,000 years



Greenland ice sheet: Measurements taken from passive microwave satellite sensors show 685,000 square kilometres of summer surface melt – an area more than double that of 1992