

Biathlon



Rifle: _____
Carried on back

COURSE: After skiing each lap of circuit, athletes fire five shots on shooting range

Missed shots: Incur circuit of penalty loop or one minute added in Individual events

Skis: Not less than 4cm shorter than skier. Waxed to improve performance

Ski poles

**10km Pursuit W
4x6km Relay W**

10km Sprint M

Start (all events)

Shooting range

Finish (all events)

150m penalty loop

20km Individual M

**15km Individual W
15km Mass Start M**

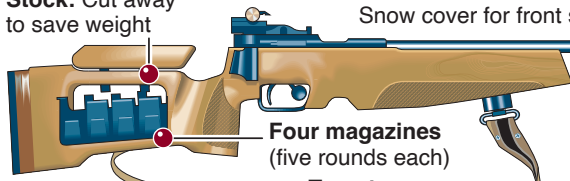
**12.5km Pursuit M
7.5km Sprint W
4x7.5km Relay M
12.5km Mass Start W**

RIFLE (.22 calibre):

Athletes must shoot from both standing and prone positions at targets 50m away

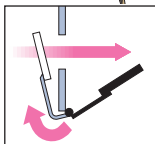
Stock: Cut away to save weight

Snow cover for front sight



Four magazines
(five rounds each)

Target diameter:
Standing
11.5cm
Prone
4.5cm



Target: Hit makes black plate fall away and white plate rise to cover hole

ALL-TIME MEDALS
Biathlon

GER/FRG/GDR	43
RUS/URS/EUN	35
NOR	18