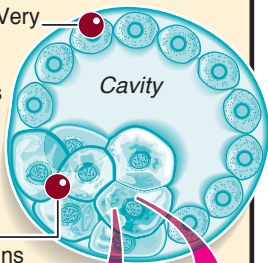


# Fertility treatment

British scientists have developed the early forms of cells that go on to become human sperm and eggs, from embryonic stem cells

**Blastocyst:** Very early embryo, 5- to 6-days old. Cell types separate and form around fluid-filled cavity



**Inner cell mass:** Contains stem cells called *primordial germ cells*

**Germ cells:** Progenitors which go on to grow into mature sperm and egg

