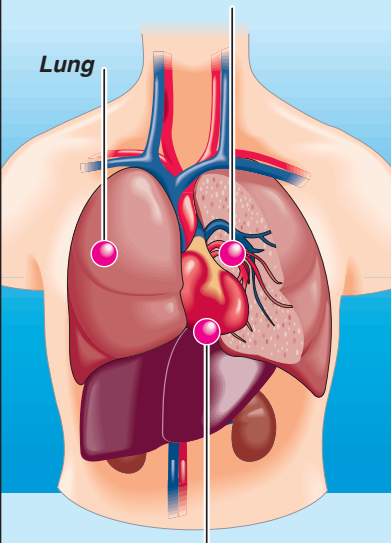


Cause of death

Princess Diana suffered multiple serious injuries in the high-speed car accident that crumpled her Mercedes and took her life. Doctors at the Hospital La Pitie Salpetriere said she died of cardiac arrest from internal bleeding

Doctors opened the princess' chest cavity and discovered a serious wound of the left pulmonary vein



The wound, the apparent source of the haemorrhage, was closed, and heart massage – external, then internal – was applied for two hours. But it failed to revive her, and she was declared dead at 4 a.m. Paris time