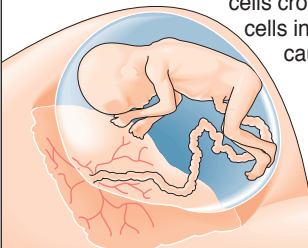


Chernobyl radiation link to infant leukaemia

Doctors studying an outbreak of child leukaemia in northern Greece have confirmed that background radiation is a contributing factor in infants exposed in the womb. The area lay directly in the path of Chernobyl fallout and is one of the most highly contaminated areas outside the former Soviet Union

In leukaemia, abnormal white cells crowd out healthy cells in bone marrow, causing anaemia and affecting the nervous and immune systems



Infant leukaemia incidence
Per million people per year

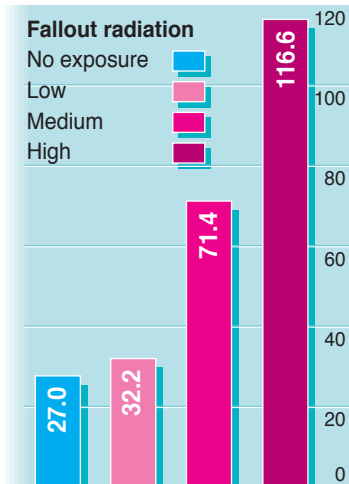
Fallout radiation

No exposure

Low

Medium

High



Radioactive clouds from Chernobyl

