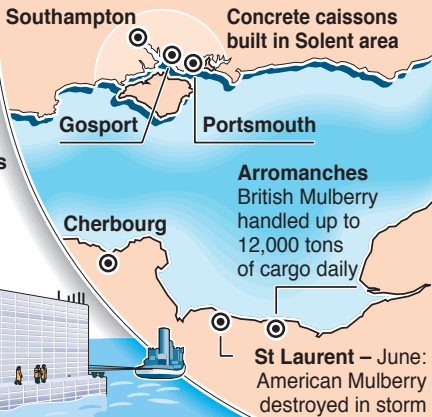
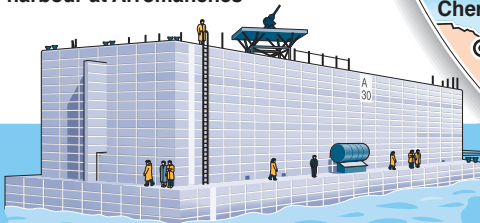


# The 'Mulberries' – the vital supply link

Two artificial harbours, codenamed Mulberries, were towed in sections across the Channel to keep the invasion force supplied until a French port could be captured intact. By August 1944, over 1,500,000 men and nearly two million tons of supplies had been landed via the Mulberry harbour at Arromanches



## Key components of the Mulberry harbours

### Gooseberry

sunken blockships provided sheltered unloading areas

### Bombardons

floating breakwaters  
400 yards apart

**Whales:** floating piers connected by floating metal roadway to shore

**Phoenix**  
line of concrete caissons weighing up to 6,000 tons each