

# Accidental spill could have caused blaze

The blaze which destroyed part of Queen Elizabeth's Windsor Castle could have started when a high-powered lamp ignited inflammable fluid used for cleaning paintings

Victoria Tower

Round Tower

State Entrance Tower

Chester Tower: badly damaged

White Drawing Room: smoke damage

Clarence Tower

Wind direction

Controlling the fire: Fire crews concentrate on establishing two natural barriers to contain the blaze – from the State Entrance Tower to the Chester Tower which adjoins the Royal Family's private apartments

②

①

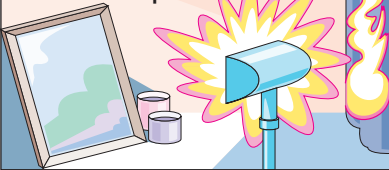
③

Brunswick Tower: badly damaged

Private Chapel: completely gutted

Prince of Wales Tower: severely damaged

① 11.38am: Fire starts when cleaning fluid accidentally spills onto a halogen lamp. Fireball spreads to curtains in Private Chapel



② 1.15pm: Blaze sweeps into St George's Hall

Fireball travels within 2 metre-high space between the wooden ceiling and stone roof



③ 3.30am: Flames reach Brunswick Tower where firemen contain the blaze by turning the tower into a chimney

