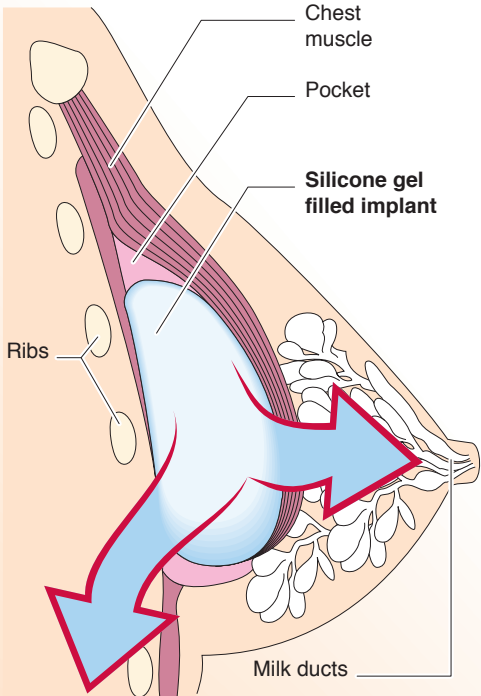


Possible health risks of breast implants

Over 150,000 breast implant operations are performed annually.

Four in five are for cosmetic purposes, the rest are for breast reconstruction following mastectomies or injury

Breast implants can be above or below the chest muscle



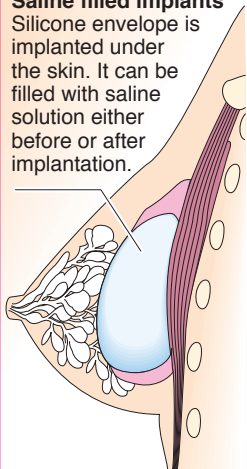
Chemicals can enter lymph system and threaten body's immune system

Leaks from implant can affect surrounding cells and put breast feeding infants at risk

The alternatives

Saline filled implants

Silicone envelope is implanted under the skin. It can be filled with saline solution either before or after implantation.



Breast reconstruction

A more complicated operation in which the patient's own tissue, usually from the lower abdomen, thighs or buttocks, is used. The volume of 'spare' tissue required means that this type of surgery is often unsuitable for thin women.